

Urban Section

An Analytic Tool for Cities and Streets



Streets as living places



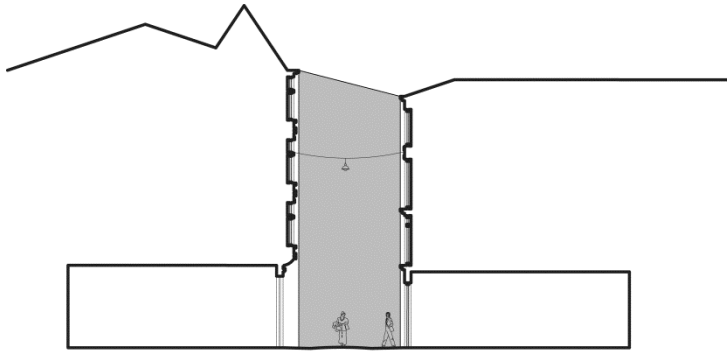
Streets as political forums



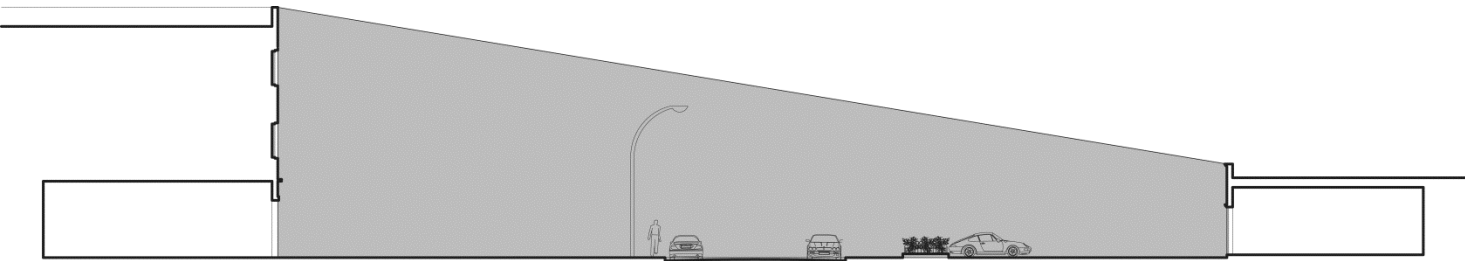
Streets as theatre



Streets as social spaces

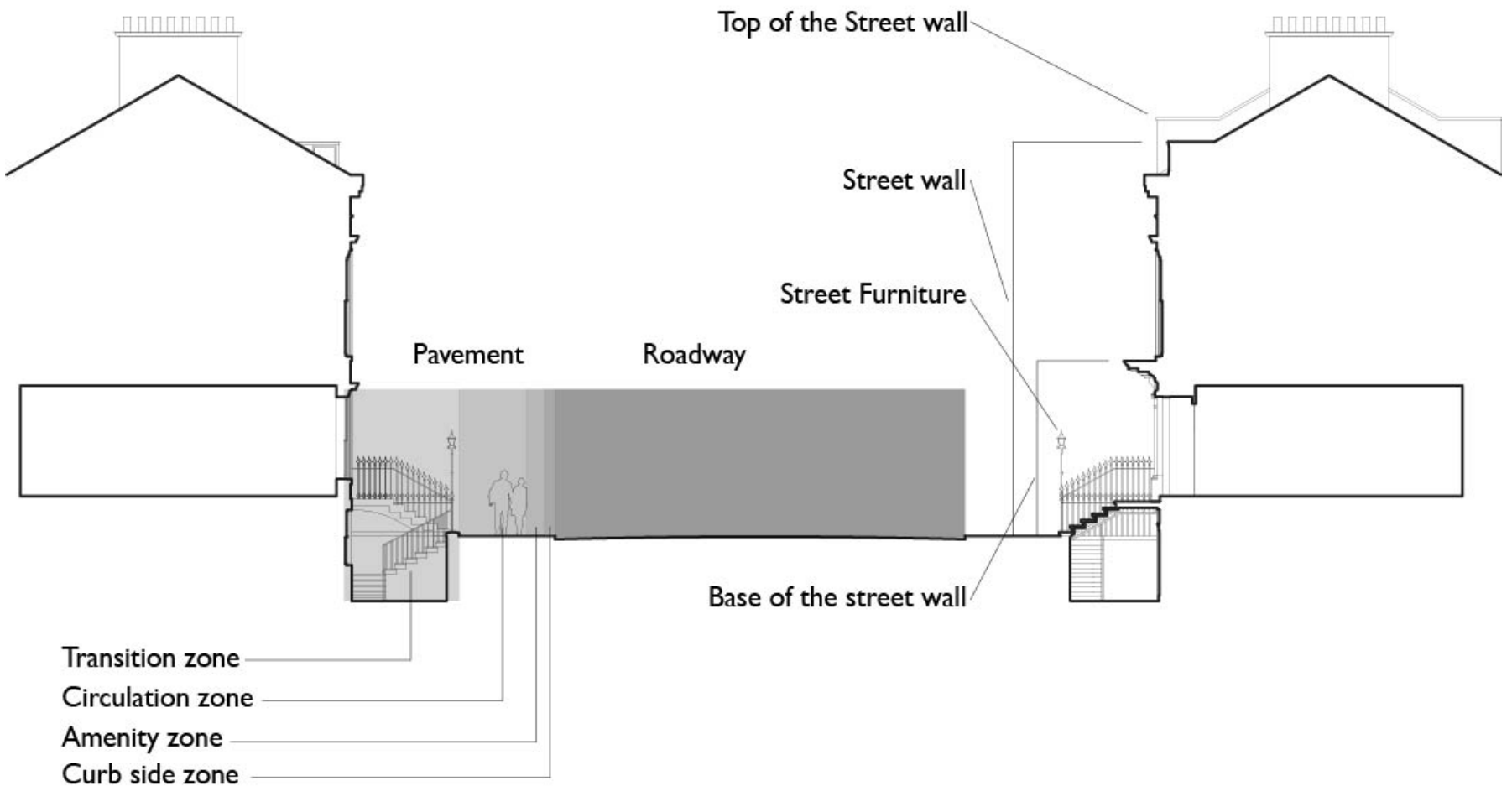


Simple Spatial Definition

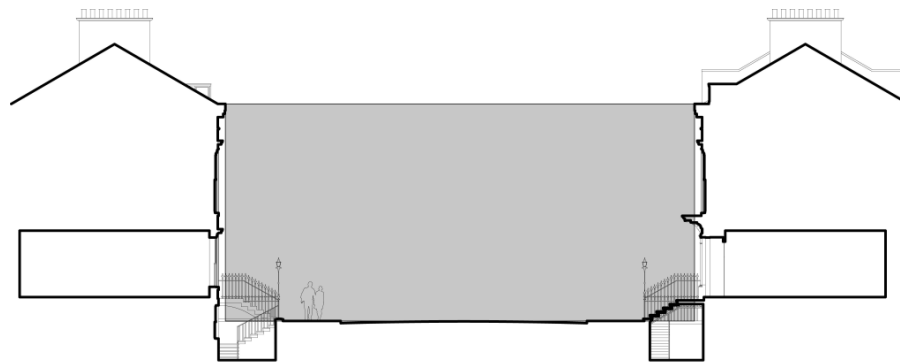


Poor Spatial Definition

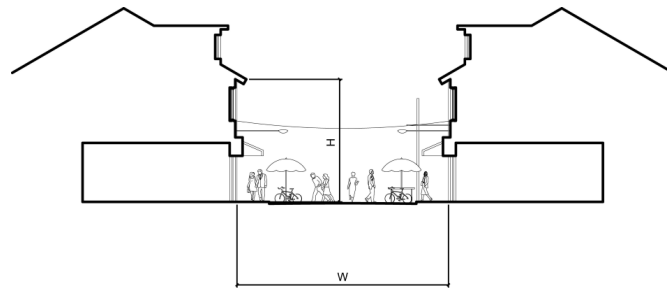
Spatial Definition



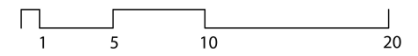
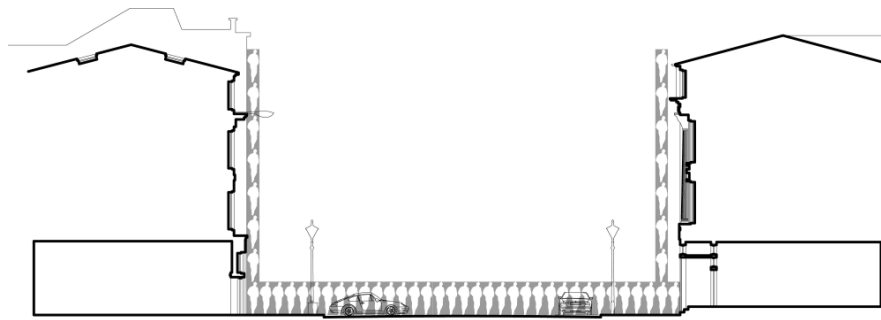
Elements of the street



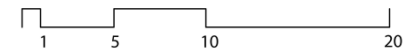
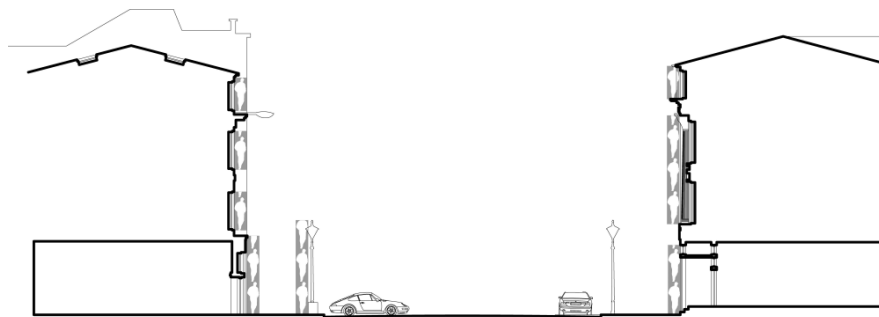
Orientation



Proportion



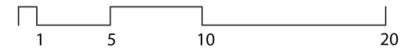
Scale



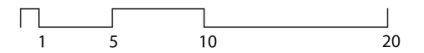
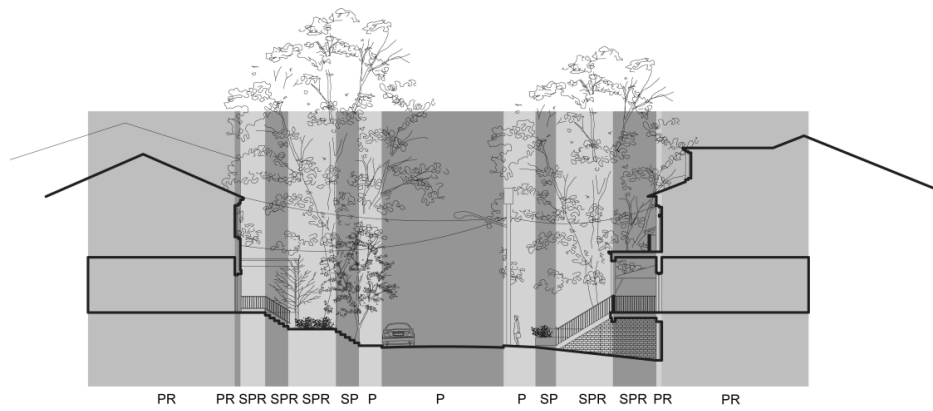
Scale of Parts



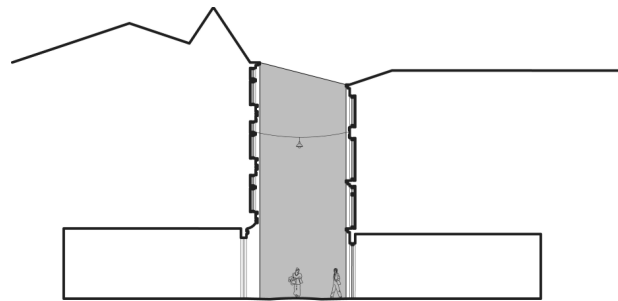
Horizontal Layers



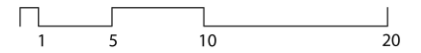
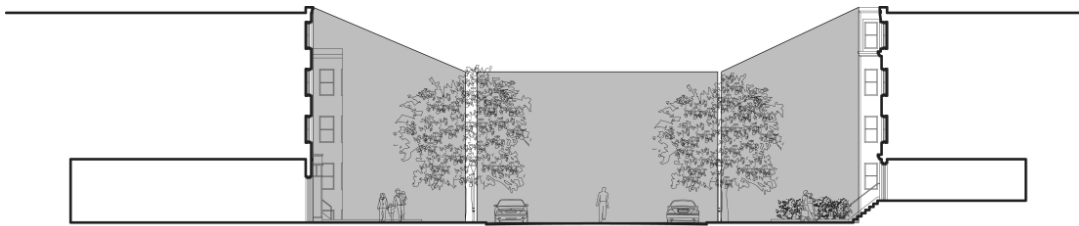
Vertical Layers



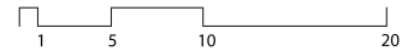
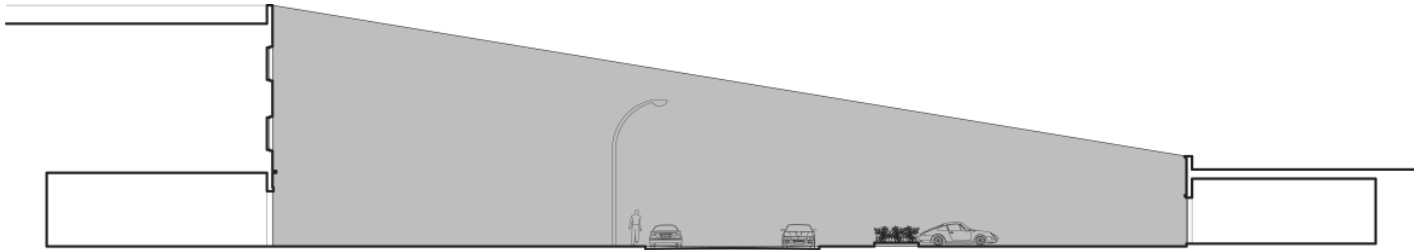
Public/Private



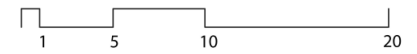
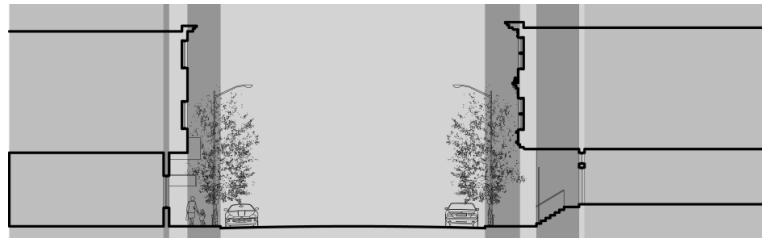
Spatial Definition – Simple



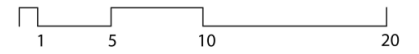
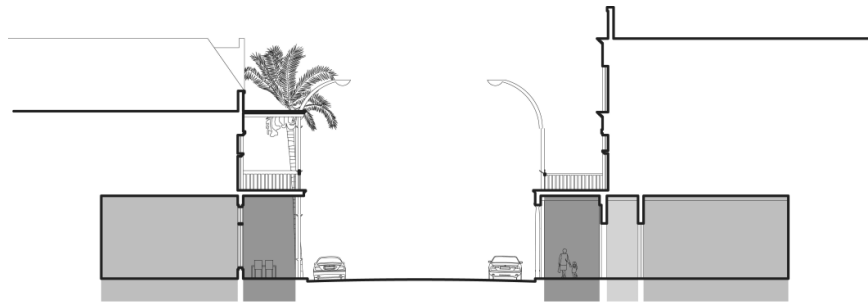
Spatial Definition - Layered



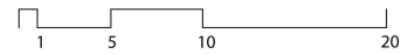
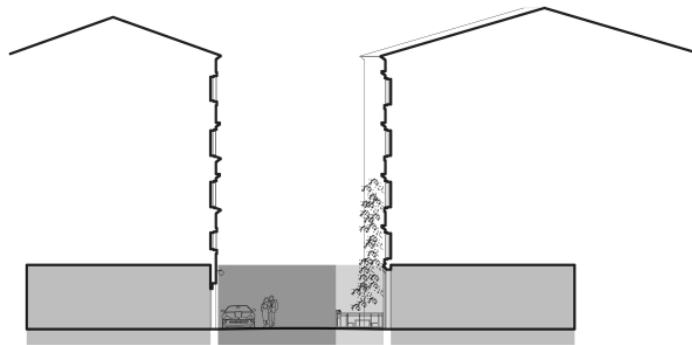
Poor Spatial Definition



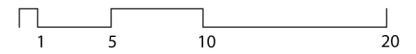
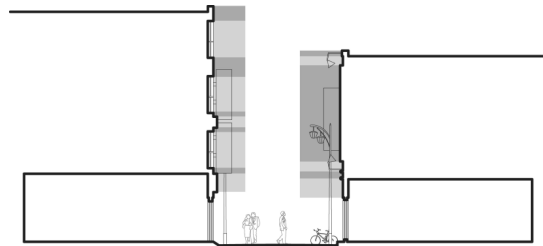
Enclosure/Exposure



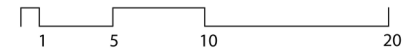
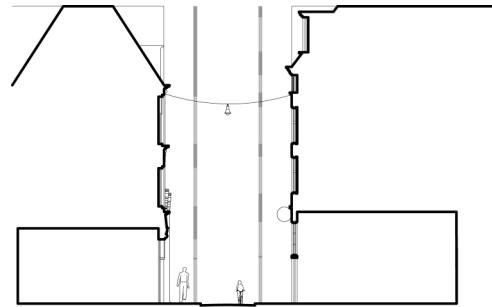
Soft Street Edge



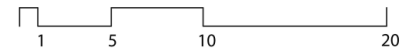
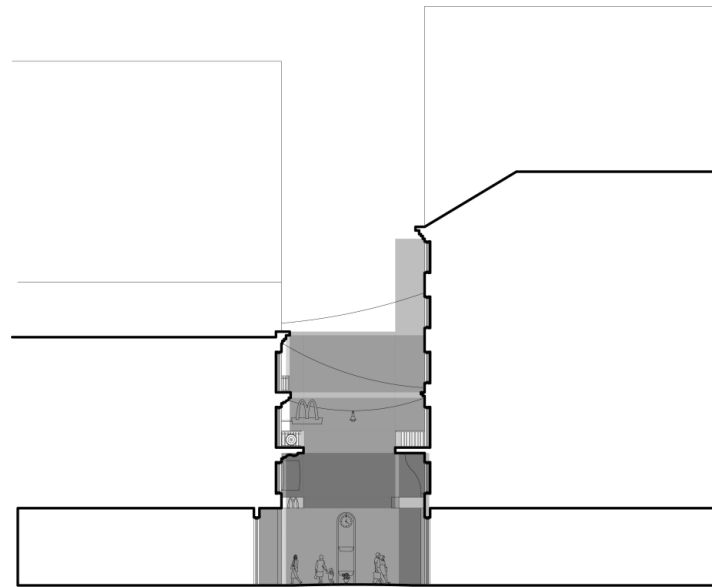
Hard Street Edge



Façade Articulation



Transparent/Opaque



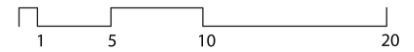
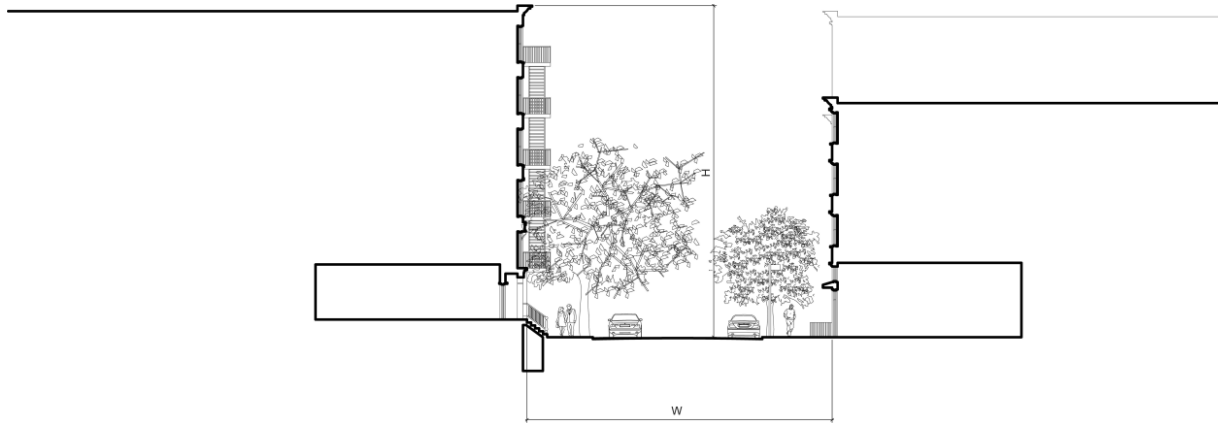
Volumetric Interaction



Orientation - E3rd Street, NYC



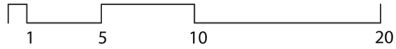
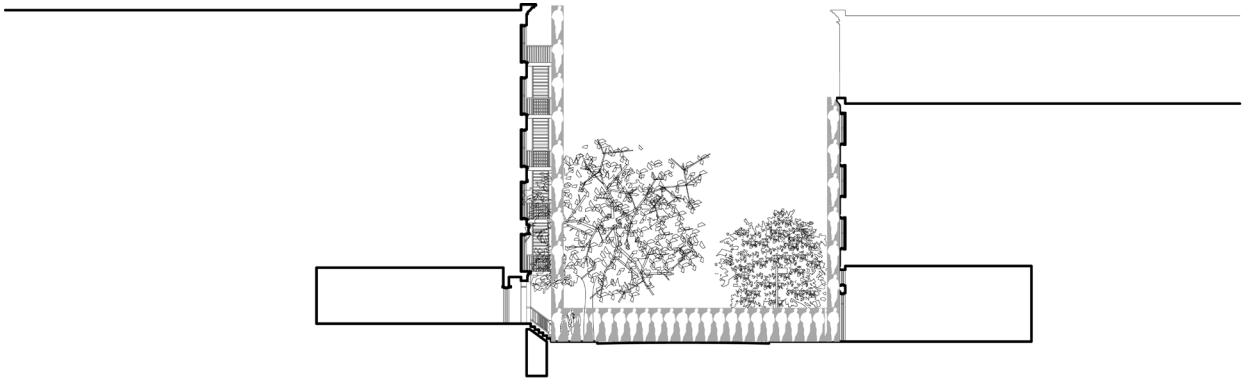
Orientation - South Bridge Road, Singapore



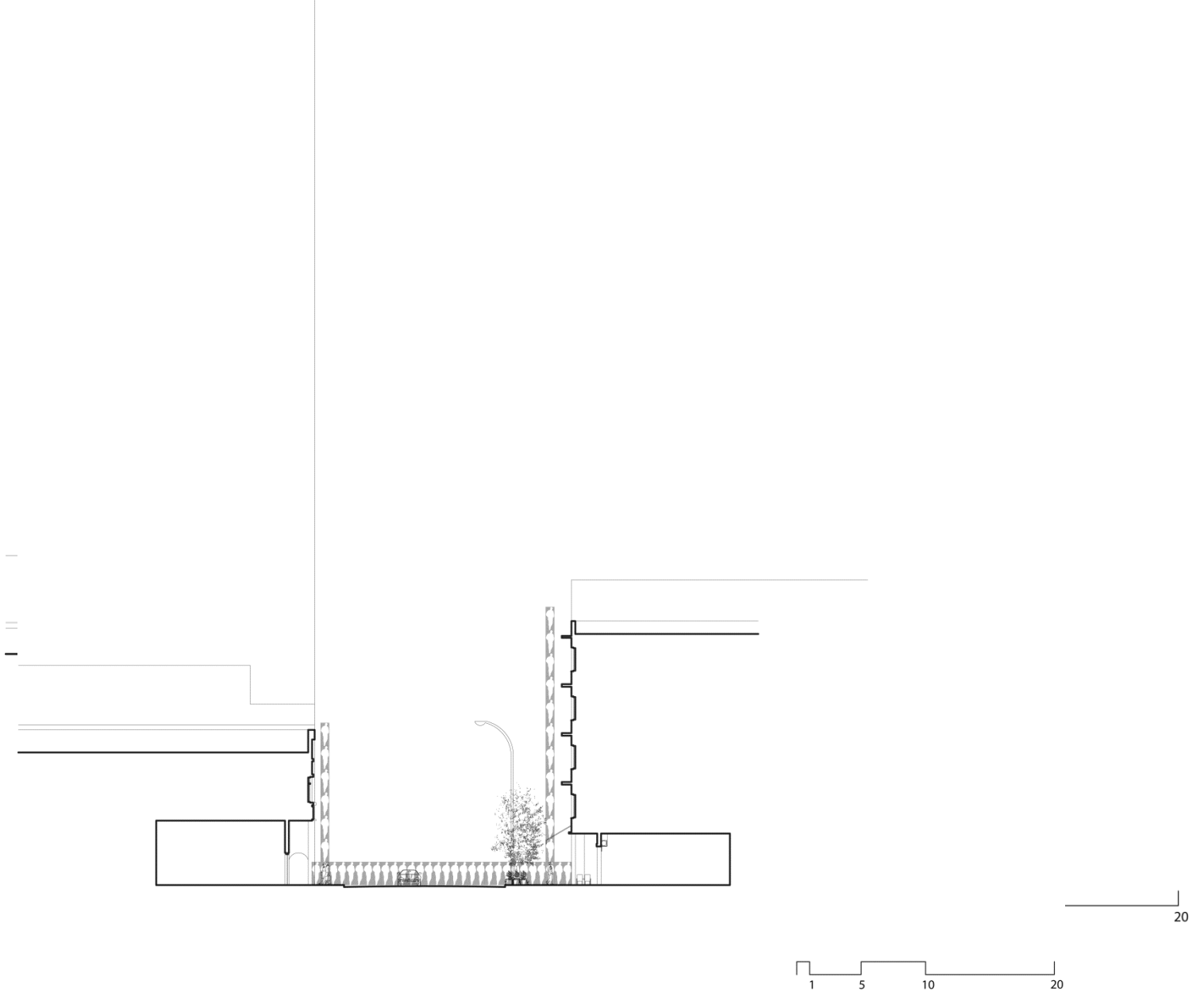
Proportion - E3rd Street, NYC



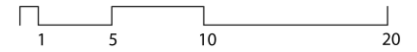
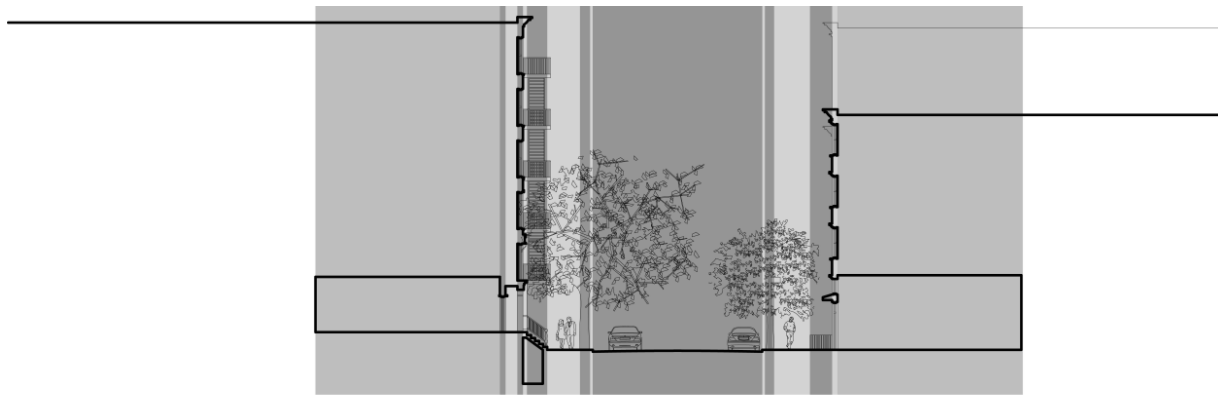
Proportion - South Bridge Road, Singapore



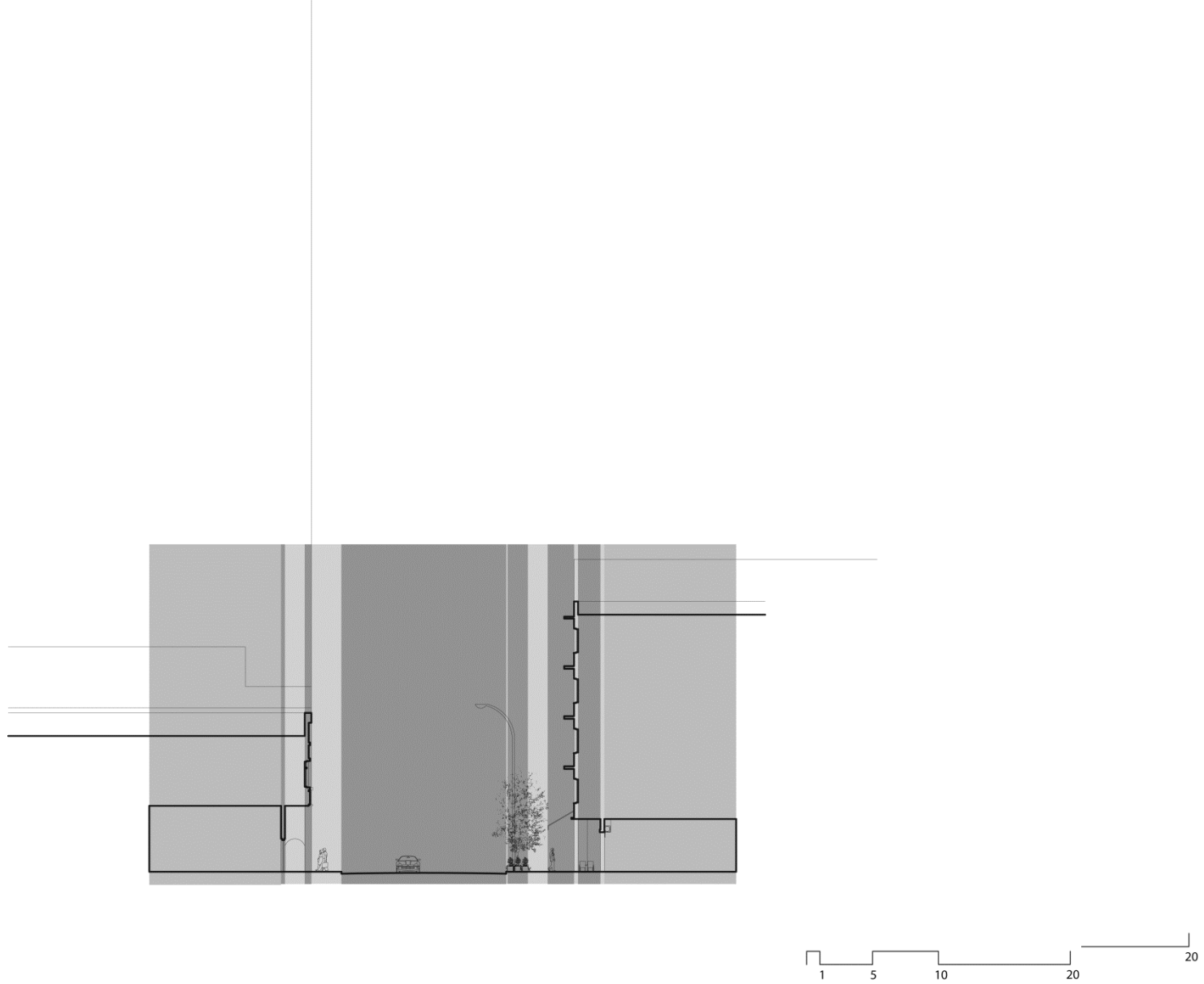
Scale - E3rd Street, NYC



Scale - South Bridge Road, Singapore



Horizontal Layers – E3rd Street, NYC



Horizontal Layers – South Bridge Road, Singapore